

Windows VPN Remote Access

July 2009

Network

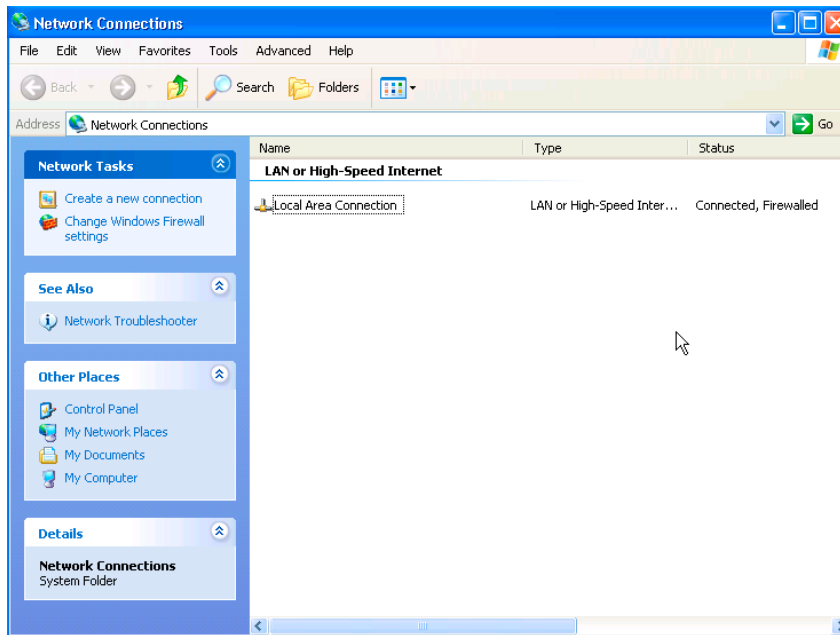
SITESOUTH

Contents

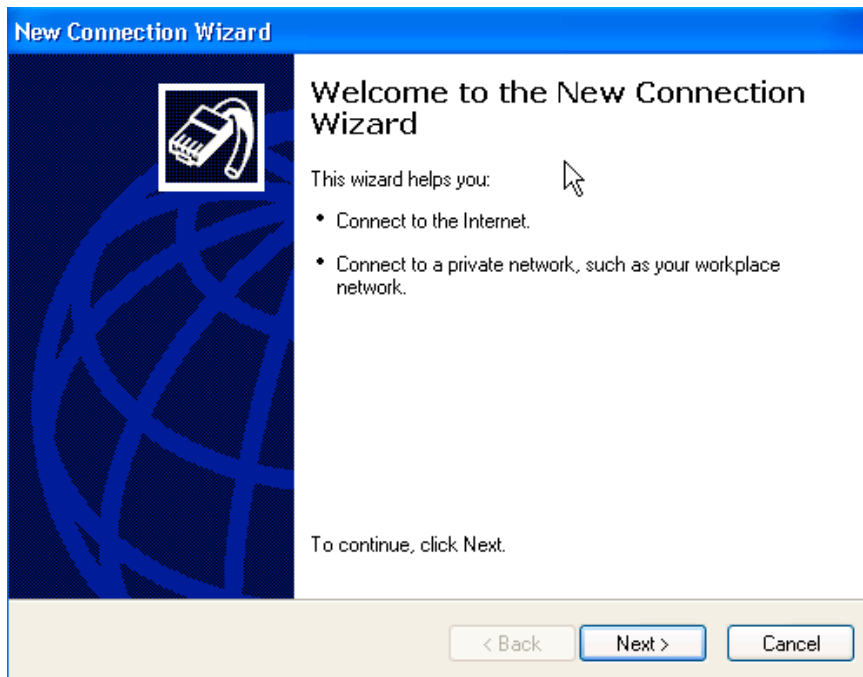
Windows VPN (L2TP) Client Setup	3
Connecting to the SiteSouth VPN	9

Windows VPN (L2TP) Client Setup

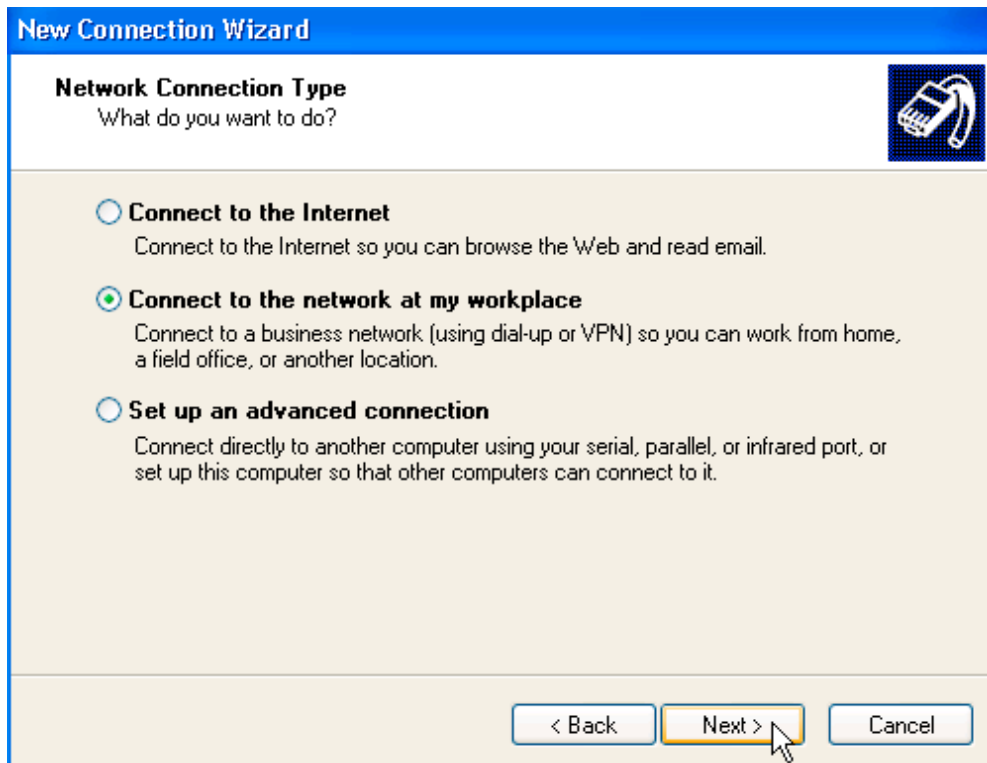
1. Open the **Network Connections** window and click **Create a new connection**



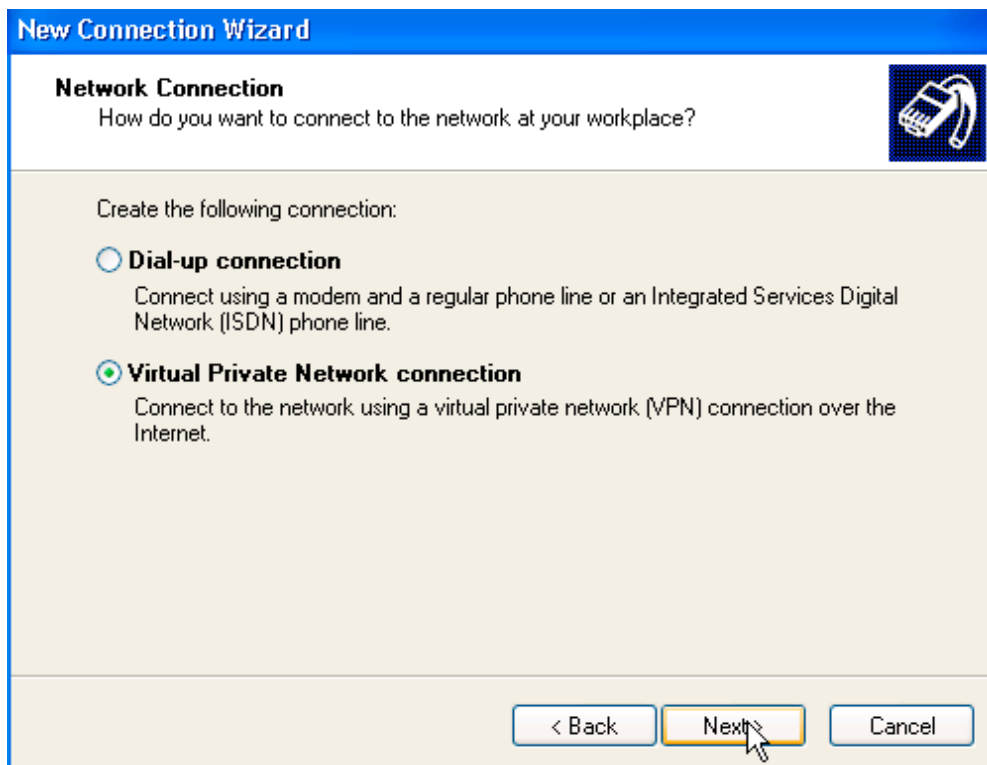
2. When the **New Connection Wizard** appears, click **Next**



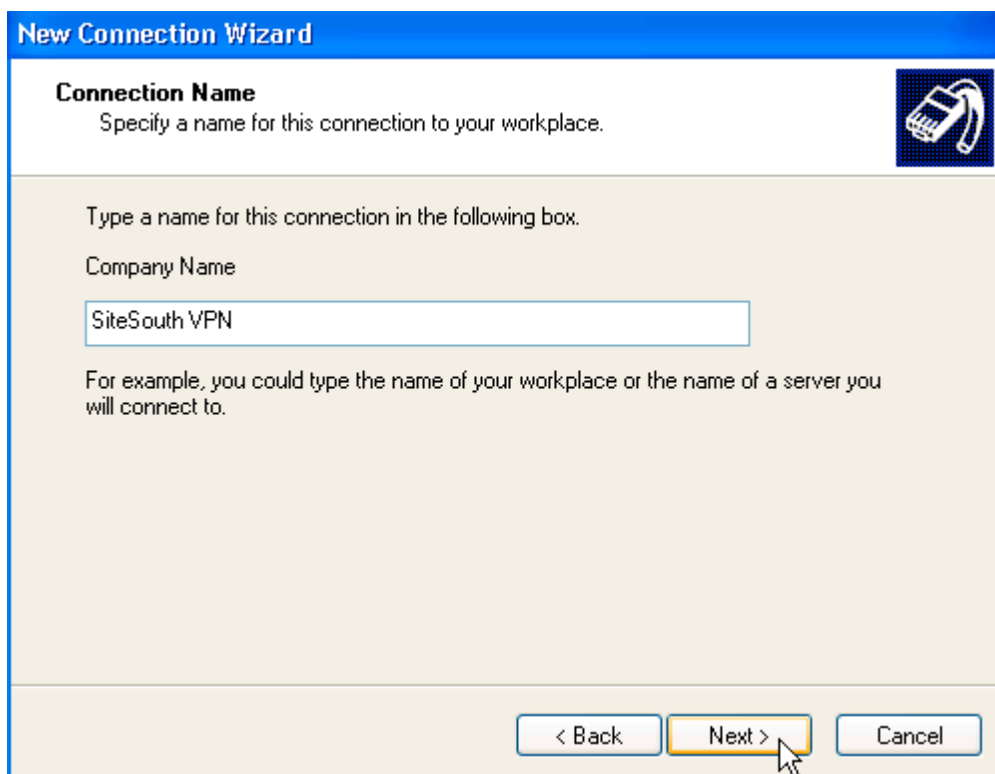
3. Select **Connect to the network at my workplace** and click **Next**



4. Select **Virtual Private Network connection** and click **Next**

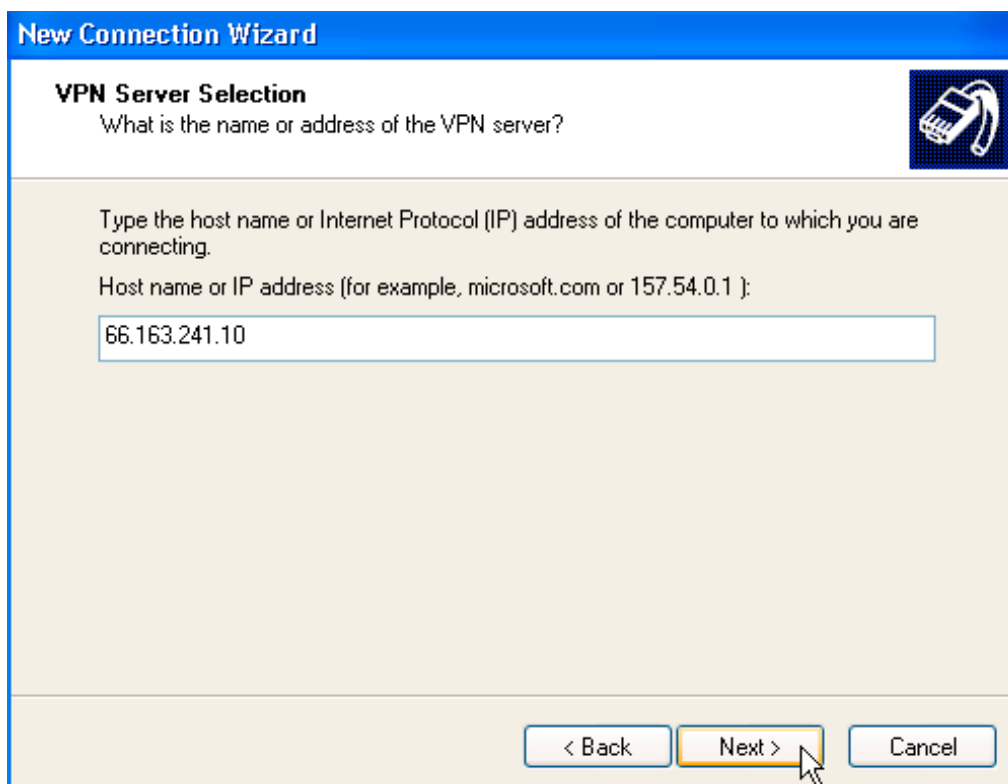


5. Provide a name for the VPN connection (i.e., SiteSouth VPN) and click **Next**



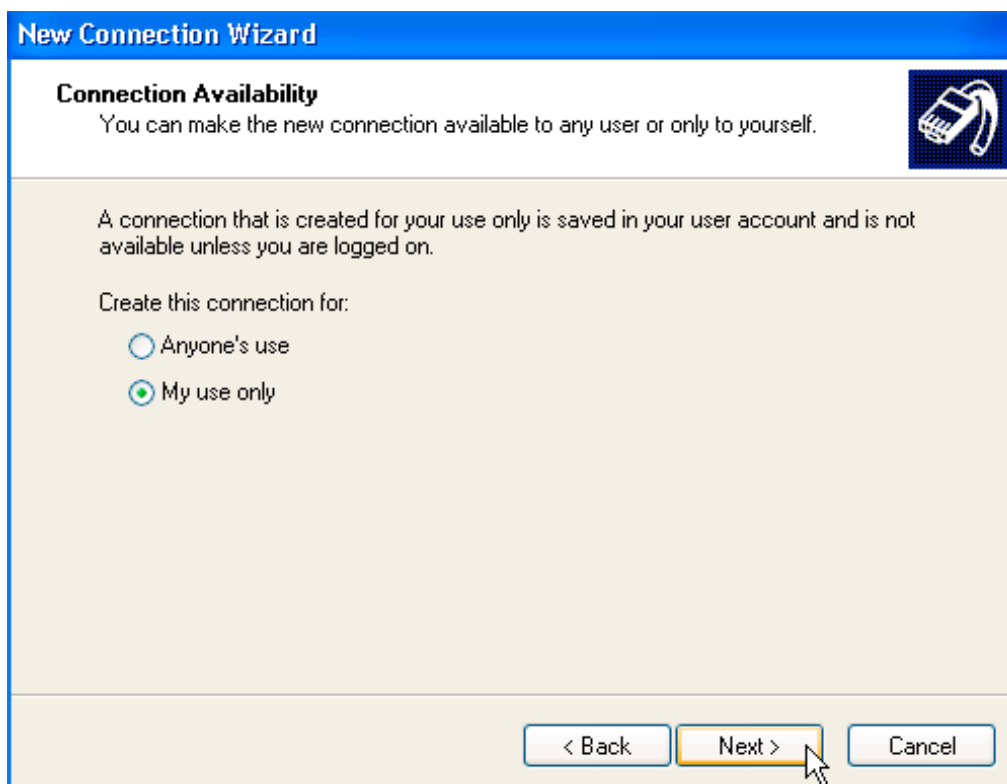
The screenshot shows the 'New Connection Wizard' dialog box with the title bar in blue. The main area has a light beige background. At the top, the title 'New Connection Wizard' is in white on a blue background. Below the title bar, the section is titled 'Connection Name' in bold black text. Underneath, it says 'Specify a name for this connection to your workplace.' in a smaller font. To the right of this text is a small icon of a mobile phone with a headset. Below this, there is a text box containing 'SiteSouth VPN'. Under the text box, there is a line of text: 'Type a name for this connection in the following box.' followed by 'Company Name' and another line of text: 'For example, you could type the name of your workplace or the name of a server you will connect to.' At the bottom of the dialog box, there are three buttons: '< Back', 'Next >', and 'Cancel'. The 'Next >' button is highlighted with a yellow border and a mouse cursor is pointing at it.

6. Provide an IP address of **66.163.241.10** and click **Next**

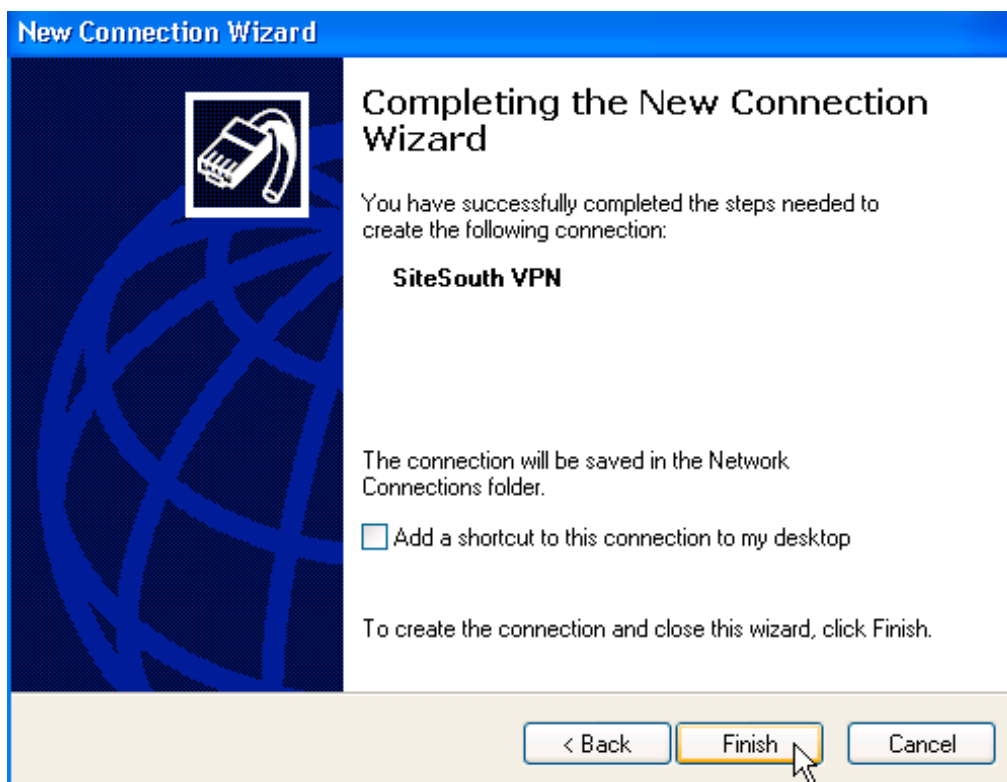


The screenshot shows the 'New Connection Wizard' dialog box with the title bar in blue. The main area has a light beige background. At the top, the title 'New Connection Wizard' is in white on a blue background. Below the title bar, the section is titled 'VPN Server Selection' in bold black text. Underneath, it says 'What is the name or address of the VPN server?' in a smaller font. To the right of this text is a small icon of a mobile phone with a headset. Below this, there is a text box containing '66.163.241.10'. Under the text box, there is a line of text: 'Type the host name or Internet Protocol (IP) address of the computer to which you are connecting.' followed by 'Host name or IP address (for example, microsoft.com or 157.54.0.1)'. At the bottom of the dialog box, there are three buttons: '< Back', 'Next >', and 'Cancel'. The 'Next >' button is highlighted with a yellow border and a mouse cursor is pointing at it.

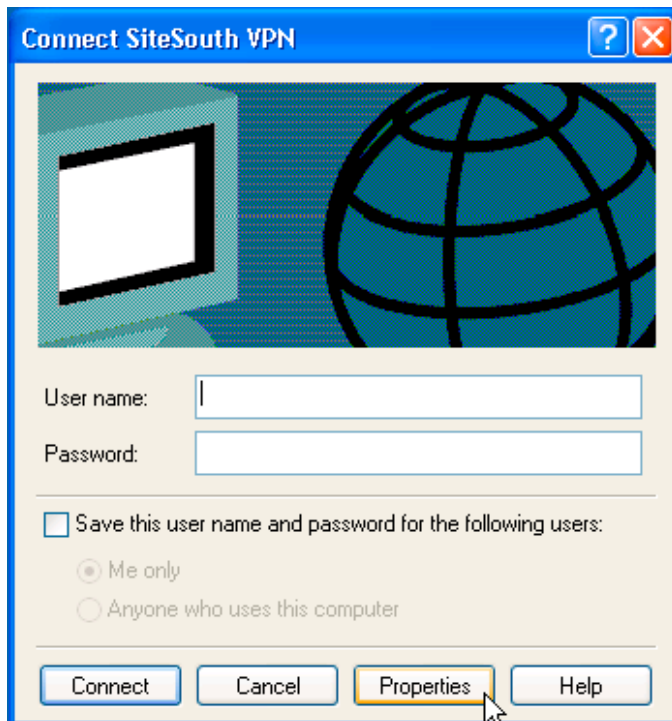
7. Select the desired connection availability and click **Next**



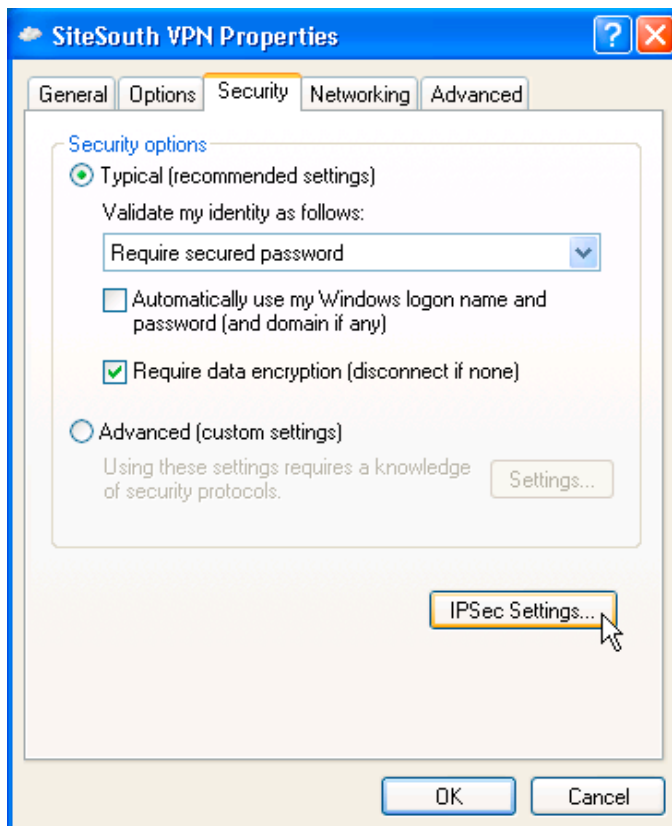
8. Click **Finish**



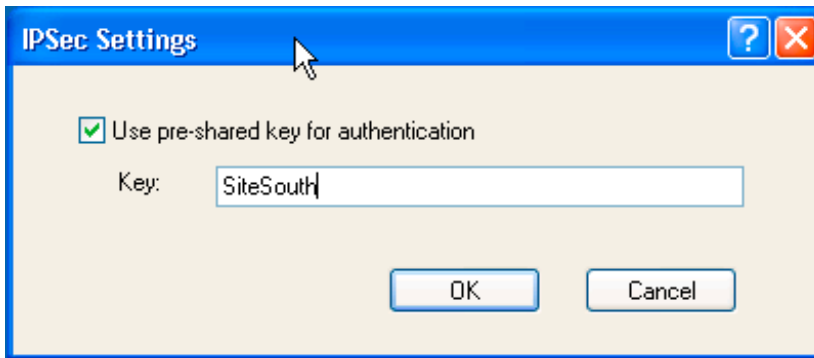
9. When the Connect...VPN window appears, click **Properties**



10. In the VPN Properties window click the **Security** tab then the **IPSec Settings** button



11. When the **IPSec Settings** window appears, check **Use pre-shared key for authentication** and type in **SiteSouth** for the Key and click **OK**

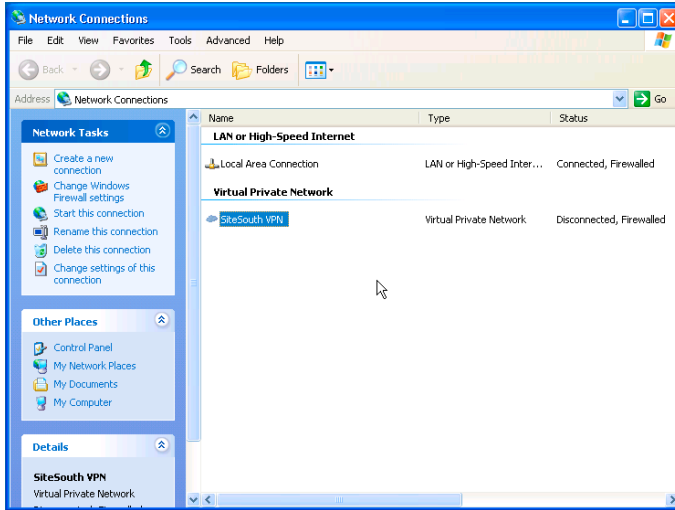


12. Click **OK** to close the VPN Properties window

Configuration of the VPN connection is now complete. Proceed to step 2 in the next section for instructions on how to connect.

Connecting to the SiteSouth VPN

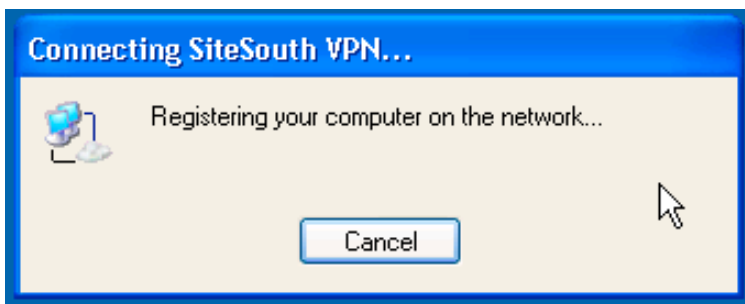
1. Double-click the newly created VPN connection under the **Network Connections** window.



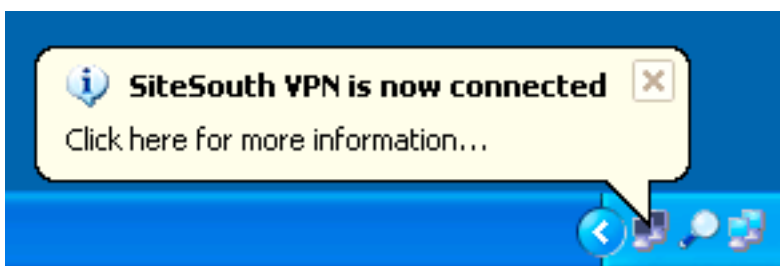
2. Fill in your assigned **username** and **password** (provided by SiteSouth). You may choose whether or not you would like to save this username and password as well. When finished click **Connect**



3. You will see the **Connecting to...VPN** window appear for several seconds



4. Once the VPN connection has been established you will see the following appear in your system tray.



You are now connected to the VPN and can access your equipment via their assigned private IP addresses.

5. To disconnect from the VPN, right-click the VPN icon in your system tray and click **Disconnect**

